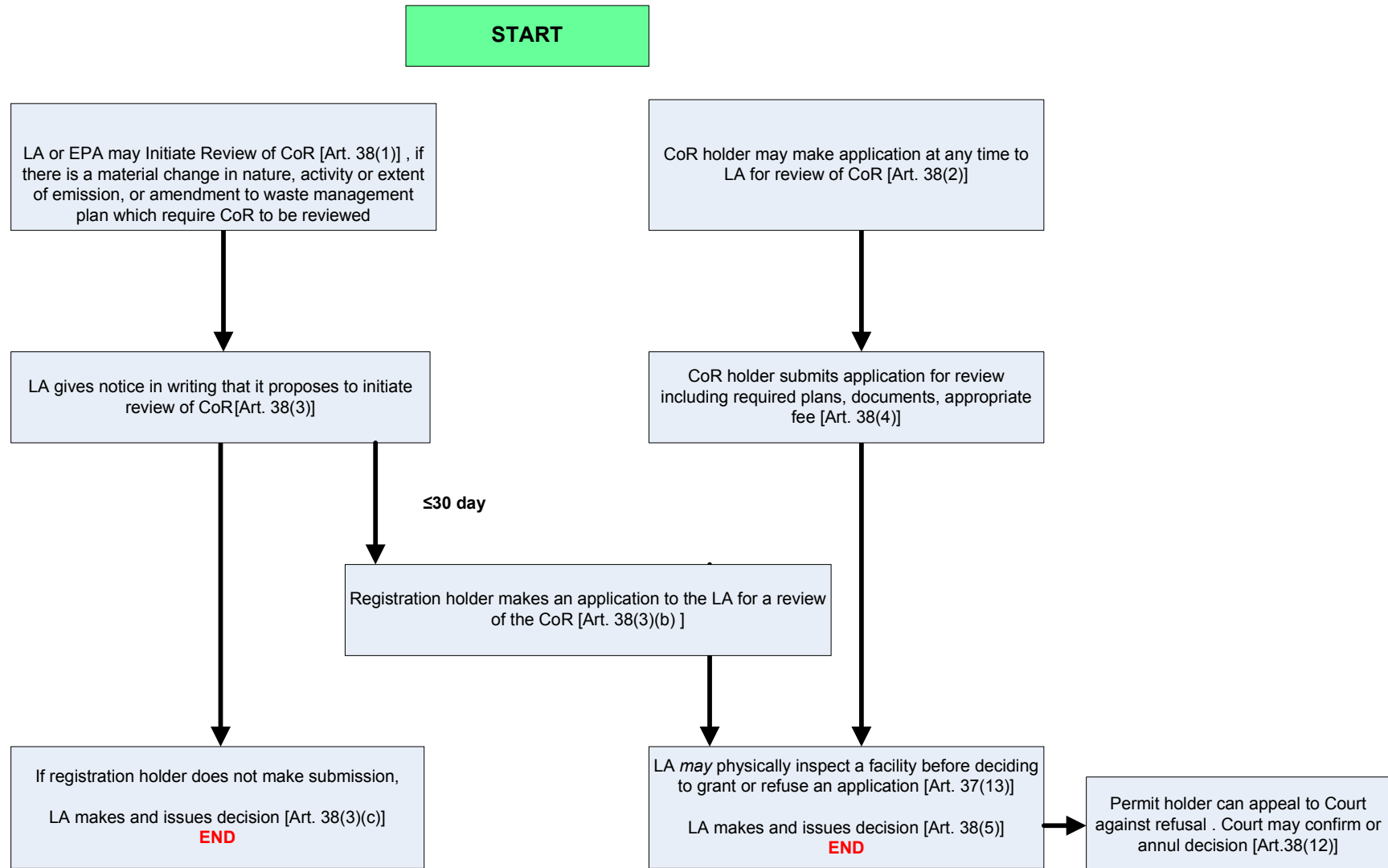


FLOWCHART 6. REVIEW OF CERTIFICATE OF REGISTRATION PROCESS – Private Sector

May 2008 V.2



Note
Ref: Waste Management (Facility Permit & Registration) Regulations 2007 (S.I No. 821 of 2007, as amended by S.I No. 86 of 2008).

CoR - means Certificate of Registration
 LA - Local Authority
 EPA - Environmental Protection Agency