



# Food Waste Prevention Programme update

**Odile Le Bolloch**

EPA Food Waste Prevention Team Lead

Presentation to Forum on Food Waste

9 Nov 2023



**CIRCULAR ECONOMY PROGRAMME**

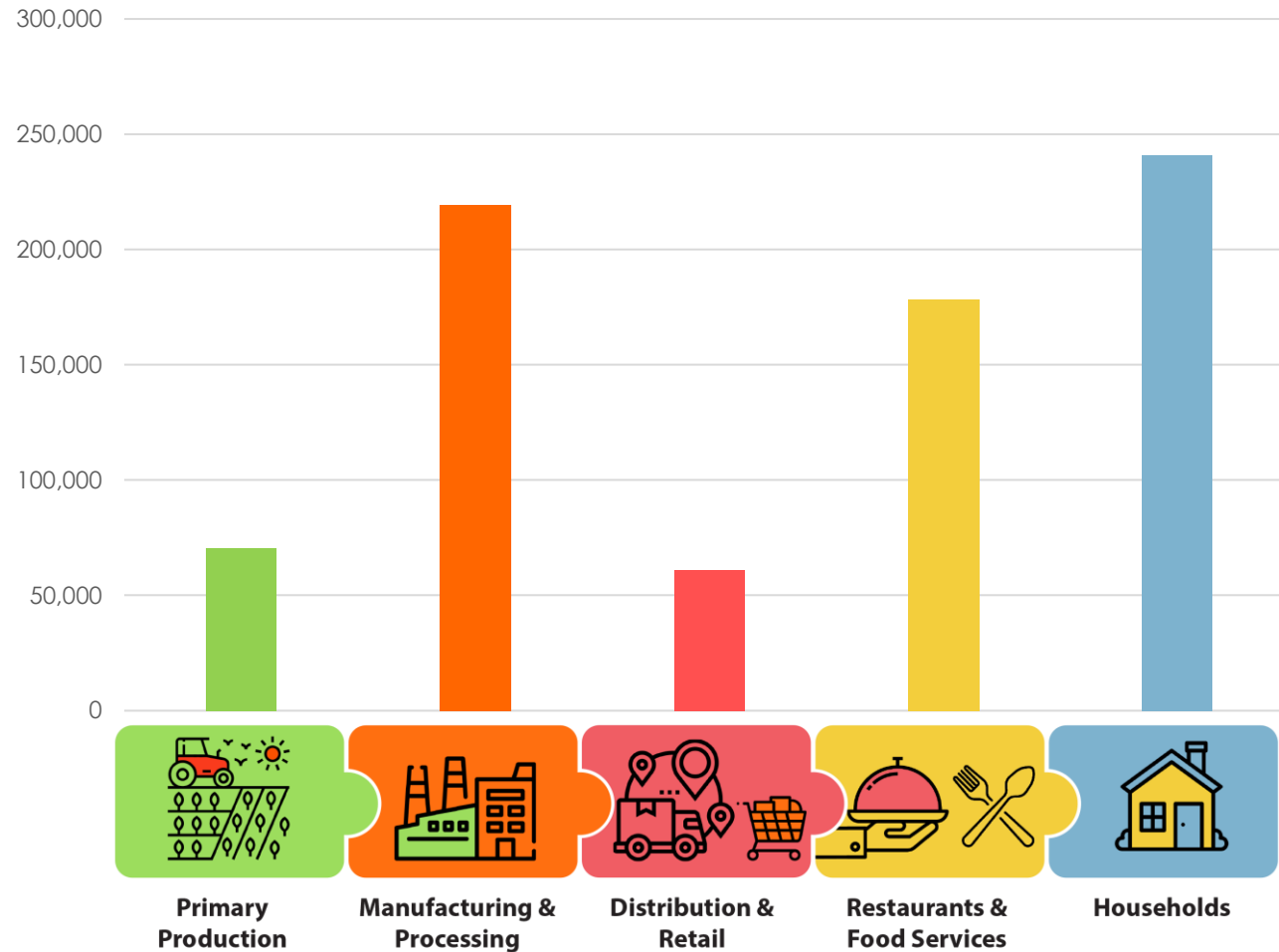
*The Driving Force for Ireland's Move to a Circular Economy*

**B&A**



Riailtas na hÉireann  
Government of Ireland

# Food Waste in Ireland, 2021 (Source: EPA)



Non-household 71%



# Reducing Food Waste – targets



**SDG 12.3:** “By 2030, **halve per capita** global food waste at the **retail** and **consumer** levels and reduce food losses along **production and supply chains**, including post-harvest losses”



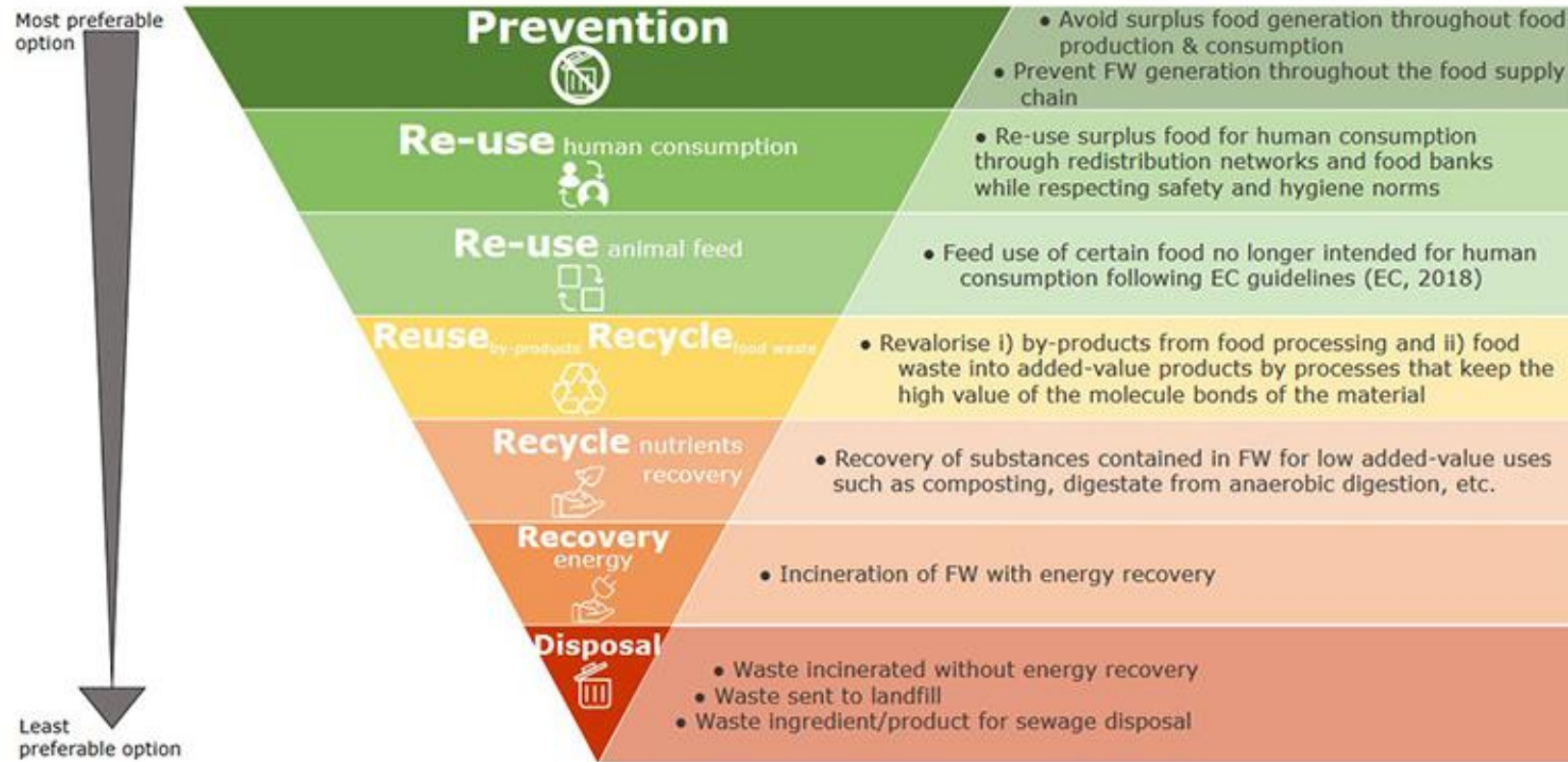
**Waste Framework Directive**, proposed binding targets by 2030\*  
reduce by:

- 30% per capita: retail, hospitality & households
- 10% processing & manufacturing

\*based on 2020 data



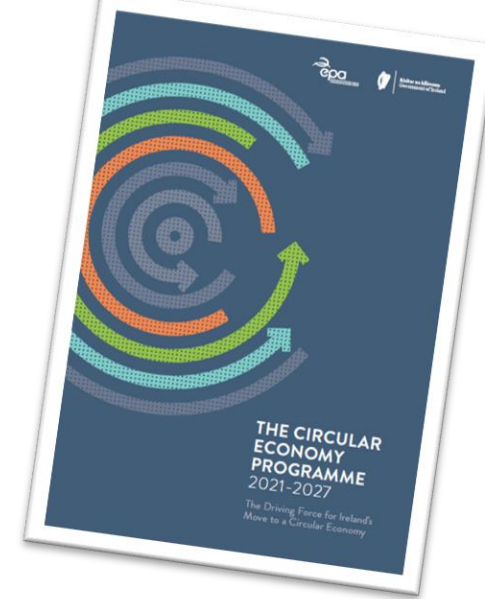
# Preventing Food Waste – food use hierarchy





# EPA Food Waste Prevention Programme

- ▶ Implemented through Circular Economy programme
  1. Supply chain & hospitality – [Food Waste Charter](#)
  2. Evidence & insights
  3. Households – [stopfoodwaste.ie](http://stopfoodwaste.ie)
  
- ▶ Strategy for food waste in business sectors:
  - ▶ Food waste in business is **quantified**, sectoral benchmarks and indicators established
  - ▶ Increased business **commitment to reducing food waste**



**CIRCULAR ECONOMY PROGRAMME**

*The Driving Force for Ireland's Move to a Circular Economy*



Rialtas na hÉireann  
Government of Ireland

# Food Waste CHARTER



## Sign the Food Waste Charter

A NATIONAL CALL TO REDUCE FOOD WASTE



### PLEDGE

Commit to reduce  
food waste



### MEASURE

Measure your  
food waste



### REDUCE

Set a target  
and take action



### REPORT

Report annually  
on achievements



THE CIRCULAR ECONOMY PROGRAMME  
The Driving Force for Ireland's Move to a Circular Economy



Environmental Protection Agency  
An tAonachtasacht um an tAonachtasacht



Riailas na hÉireann  
Government of Ireland

[foodwastecharter.ie](http://foodwastecharter.ie)



CIRCULAR ECONOMY PROGRAMME

The Driving Force for Ireland's Move to a Circular Economy



Environmental Protection Agency  
An tAonachtasacht um an tAonachtasacht



Riailas na hÉireann  
Government of Ireland

# Food Waste CHARTER



An Roinn Comhshaoil,  
Aeráide agus Cumarsáide  
Department of the Environment,  
Climate and Communications



An Roinn Talmhaíochta,  
Bia agus Mara  
Department of Agriculture,  
Food and the Marine



**CIRCULAR ECONOMY PROGRAMME**

*The Driving Force for Ireland's Move to a Circular Economy*



Riailtas na hÉireann  
Government of Ireland

# Current Members



CIRCULAR ECONOMY PROGRAMME

The Driving Force for Ireland's Move to a Circular Economy



Rialtas na hÉireann  
Government of Ireland



# Building knowledge and capacity – food waste measurement

## EPA Food Loss and Waste Measurement Protocol

FOR THE FOOD AND DRINK MANUFACTURING SECTOR

THE CIRCULAR ECONOMY PROGRAMME  
The Driving Force for Ireland's Move to a Circular Economy

## EPA Food Service Pathway to less food waste & better margins

There is compelling evidence of how much hospitality and food service businesses can improve their bottom line by minimising food waste. Some savings come through lower waste management costs, but the largest savings come through reducing the raw materials that end up as food waste.

Reducing this food waste is not just financially rewarding, it has the added benefit of reducing carbon emissions and contributes towards addressing climate change.

Before you decide on any course of action, you need to know what food waste is coming out of your business, where it is coming from and what causes it to happen.

THE CIRCULAR ECONOMY PROGRAMME  
The Driving Force for Ireland's Move to a Circular Economy

## EPA Food Service Pathway to less food waste & better margins

There is compelling evidence of how much hospitality and food service businesses can improve their bottom line by minimising food waste. Some savings come through lower waste management costs, but the largest savings come through reducing the raw materials that end up as food waste.

Reducing this food waste is not just financially rewarding, it has the added benefit of reducing carbon emissions and contributes towards addressing climate change.

Before you decide on any course of action, you need to know what food waste is coming out of your business, where it is coming from and what causes it to happen.

THE CIRCULAR ECONOMY PROGRAMME  
The Driving Force for Ireland's Move to a Circular Economy

### Food service 'touchstone' report

Fill in the blank white cells

Quick service restaurant

Bin type	3A Total waste (tonnes)	3B Estimated food waste content (tonnes)	3C Scaled up values if bins for less than a year used	3D Food waste segregation - percentage by bin type for this business
Bin 1	26.193	25	0	77%
Bin 2	17.274	6	0	17%
Bin 3	22.041	2	0	6%
Bin 4	32	0	0	

Cost of food waste for this type of food service - €7.73

Percentage of avoidable food waste for this type of food service - 63%

Estimated cost of food waste for this business - €88,000

Waste tonnage estimate for each bin type? (Reported in 3A above)

Contractor's on-board weighing records: ☆

Other method (please describe below): ☆

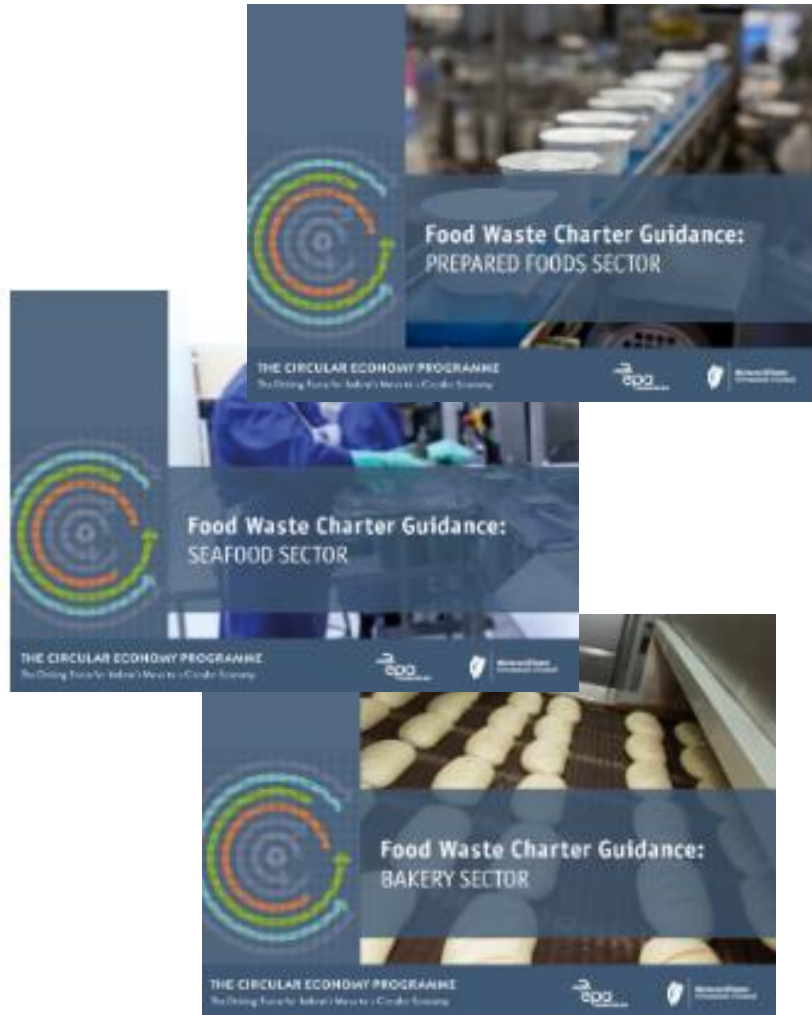
We don't use this waste collection/recycling service: ☆

Disposal: ☆





Legislation (e.g. category 3): ☆



# Building knowledge and capacity - guidance



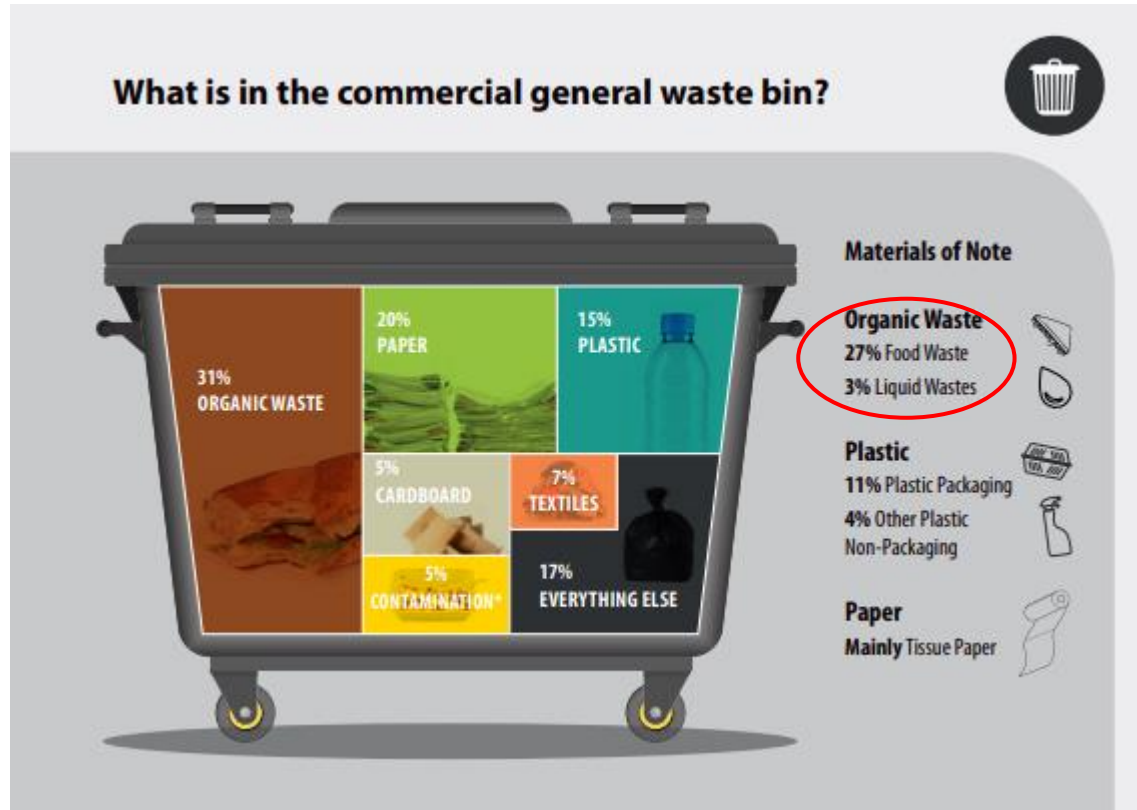
## ACTIONS CHECKLIST - see how you're doing

 PLEDGE	1	We have pledged our commitment to the Food Waste Charter to work together to reduce food waste.	
	2	The Food Waste Charter is a public commitment and as such we communicate our commitment to staff (e.g. via staff briefings) and externally with customers (e.g. via our website and social media).	
 MEASURE	1	We measure and record our food waste in line with the Food Loss and Waste Measurement Protocol. ( <a href="https://www.foodwastecharter.ie">https://www.foodwastecharter.ie</a> ).	
	2	We have a Food Waste Reduction (FWR) target.	
	3	We regularly (minimum monthly) track progress against our FWR target.	
	4	Our percentage food waste is a company KPI (key performance indicator).	
	5	We report progress against our food waste KPI at monthly management meetings.	
 REDUCE	1	We design out waste at the sourcing stage. By considering sources of waste in product recipes and processing at the concept stage with our suppliers and sourcing teams, we can design out potential causes of waste.	
	2	We work with procurement team and suppliers to ensure that ingredients are purchased in batch appropriate quantities.	
	3	We align production and sales planning more closely in the supply chain, including order timing and the production of mutually agreed forecasts to reduce discrepancies between actual sales and orders.	
	4	We use methods like Whole Chain Planning to reduce waste that arises at various stages throughout the supply chain.	
	5	We minimise production changeovers.	
 REPORT	1	We report annually on our progress and achievements.	
	2	We publicly report annually on our progress and achievements.	
	3	We have produced a case study to showcase our progress and achievements.	





# Evidence & insights - waste characterisation (Source: EPA)



[2022-Non-Household-Municipal-Waste-Characterisation-Booklet.pdf \(epa.ie\)](https://www.epa.ie/publications-and-reports/2022-Non-Household-Municipal-Waste-Characterisation-Booklet.pdf)



## 1<sup>st</sup> March is National Stop Food Waste Day

- ▶ Awareness raising
- ▶ Behaviour change
  - ▶ Planning
  - ▶ Purchasing
  - ▶ Storage
  - ▶ Serving & using leftovers



- Instagram: @stopfoodwaste.ie
- Twitter: @Stop\_Food\_Waste
- Facebook: @StopFoodWaste.ie
- LinkedIn: @Environmental Protection Agency Ireland



# Benefits to business

- ▶ Save money and reduce waste bills
- ▶ Reporting on ESG/CSR commitments
- ▶ Measure & identify potentially preventable waste
- ▶ Opportunities for valorization of current food waste residues
  - ▶ Potential co-products/by-products
- ▶ Evaluation & monitoring progress – benchmarks



**CIRCULAR ECONOMY PROGRAMME**

*The Driving Force for Ireland's Move to a Circular Economy*



Rialtas na hÉireann  
Government of Ireland



# Towards 2030...

- ▶ National Roadmap to drive action
- ▶ Actions targeting food sector must be linked to consistent measurement
  - ▶ Data and evidence to support action
  - ▶ Highlight good practice to build capacity
  - ▶ Monitoring of progress
- ▶ Voluntary agreement approach to start
- ▶ Need everyone to play their part to achieve scale
  - ▶ Sign the Charter and take action and report on achievements



**CIRCULAR ECONOMY PROGRAMME**

*The Driving Force for Ireland's Move to a Circular Economy*



Rialtas na hÉireann  
Government of Ireland

# SIGN THE FOOD WASTE CHARTER

JOIN OTHER IRISH FOOD AND DRINK SECTOR  
BUSINESSES AND PLEDGE YOUR  
COMMITMENT TO REDUCE FOOD WASTE  
NOW.

Sign the Charter

<https://foodwastecharter.ie/>



**CIRCULAR ECONOMY PROGRAMME**

*The Driving Force for Ireland's Move to a Circular Economy*



Riailtas na hÉireann  
Government of Ireland